





WHAT WE OFFER:

- **Technical Off-Road Driving**
- **High Speed Off-Road Driving**
- **Non Standard Engineering Techniques**
- **Standard Recovery Techniques**
- **Non-Standard Recovery Techniques**
- **Basic Automotive Maintenance**
- **Advanced Automotive Maintenance**
- **Vehicle Defense**
- **Roll Over Trainer**
- **High Speed Evasive Driving**
- **Motorcade Operations**
- **Live Fire Driving Scenarios**
- **Full Mission Profiles**

***All mobility training is conducted by professional off/on road drivers coupled with experienced Special Operations Operators**



ASYMMETRIC
SOLUTIONS

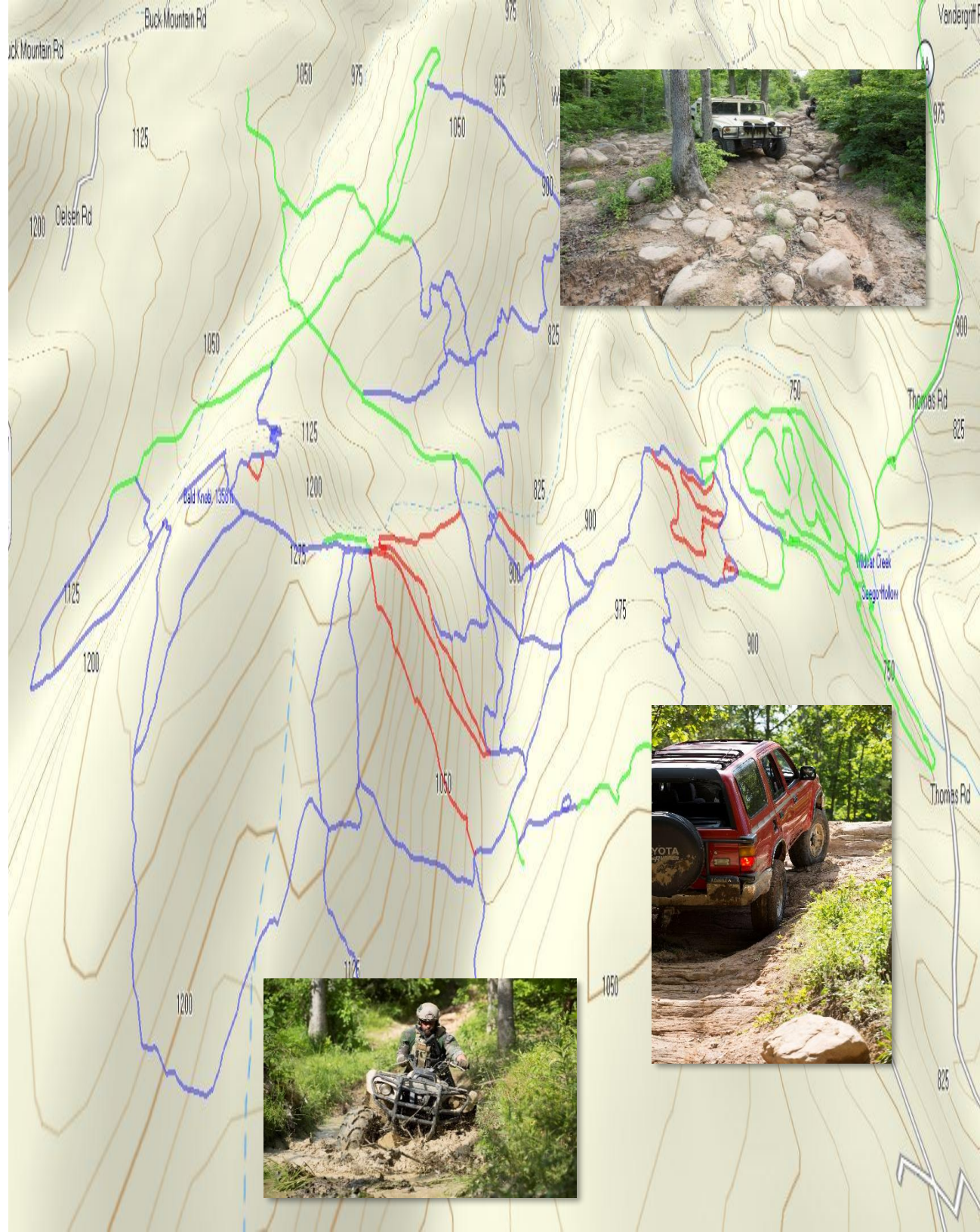
- **Off-road Obstacle Course:**
 - Log crossing
 - High Angle Concrete Curb Climb
 - Deep Water Crossing (Fording Pit)
 - Mud/ Recovery Pit
 - Ditch Crossing
 - High Center negotiation
 - Rock Garden
 - High angle Slope/ Decline
 - Sand Pit
 - Culvert Pit
 - LIVE FIRE BACK STRETCH
- Beginner High Speed Rally Track (.75 mile)

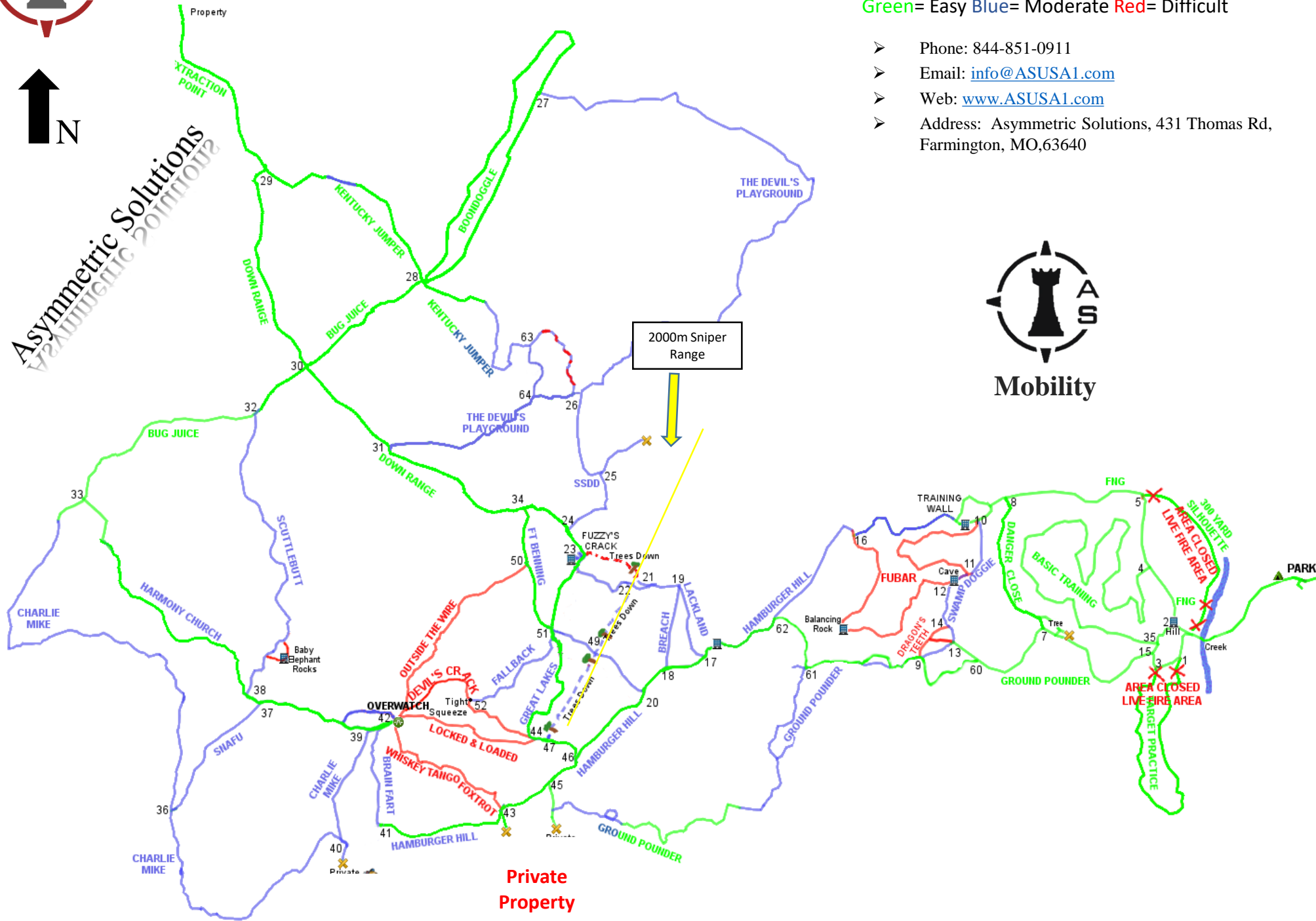




**70+
MILES
OFF-ROAD
MOBILITY
LIVE
FIRE**

- Beginner-Pro lanes
- Rock obstacles
- Creek Crossings
- Mud obstacles
- Cliff negotiation
- Slope negotiation
- Countless natural obstacles
- Navigational interlocked trail system
- 1000ft elevation change
- IED Simulations





Green= Easy Blue= Moderate Red= Difficult

- Phone: 844-851-0911
- Email: info@ASUSA1.com
- Web: www.ASUSA1.com
- Address: Asymmetric Solutions, 431 Thomas Rd, Farmington, MO, 63640





- **Unimproved Surface High Speed Rally:**
 - Beginner High Speed Rally (.75 Mile)
 - Advanced Rally (2.6 Mile)



- 1 Track 1 (3 Miles)
- High Speed Vehicle Dynamics
 - Evasive Driving
 - Advanced Motorcade Operations

- 2 Track 2 (.75 Miles)
- Obstacle Avoidance
 - Crash Pad
 - Skid Pad

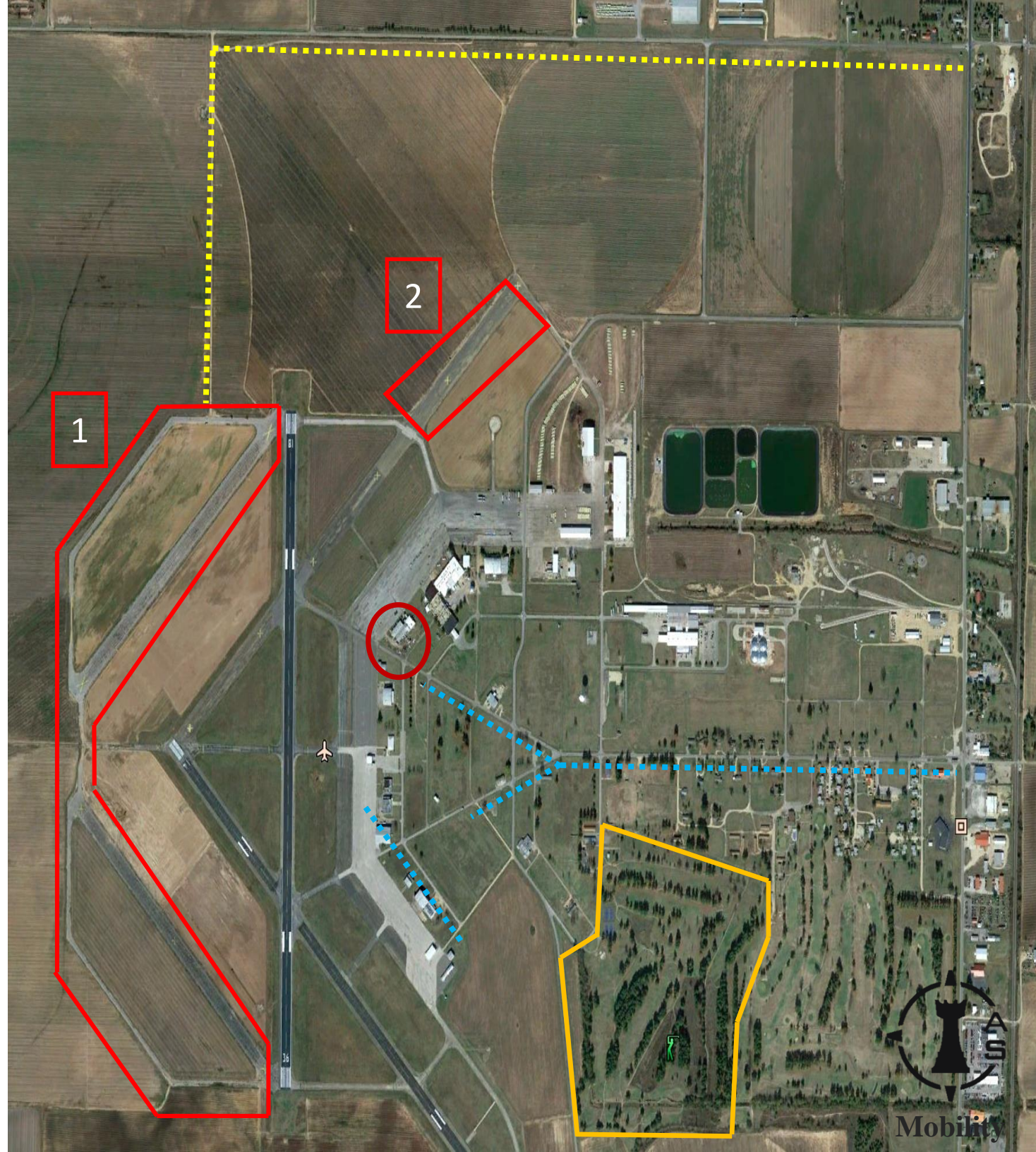
Training Access Road

Facility Access Road

Improved Surface Track

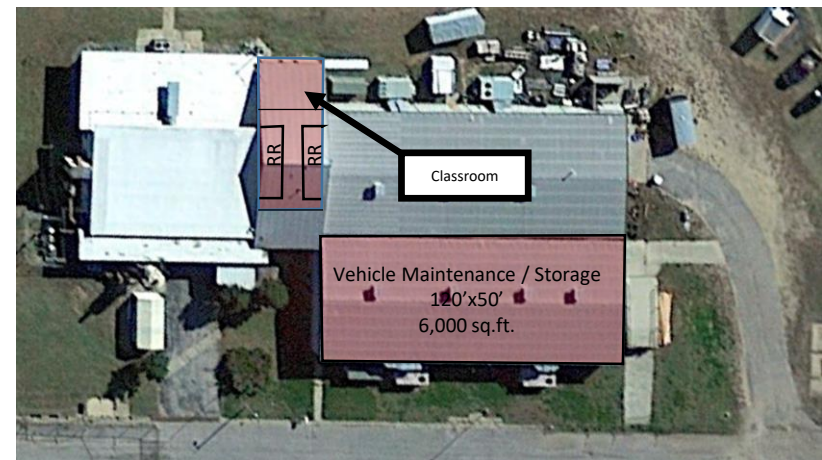
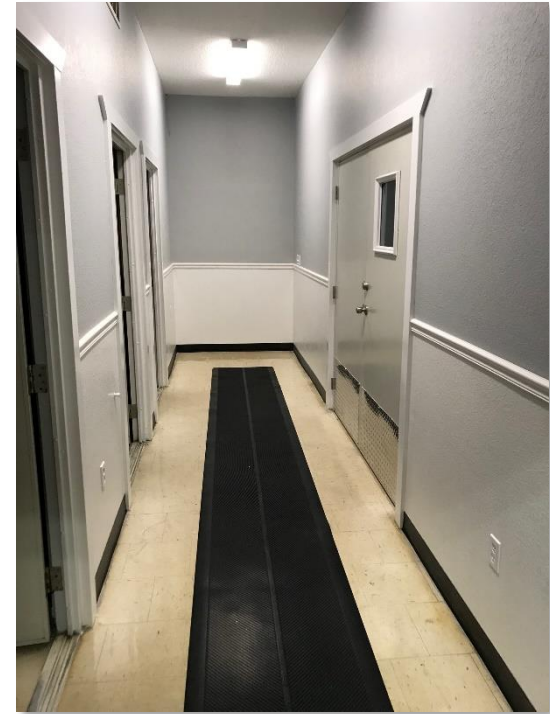
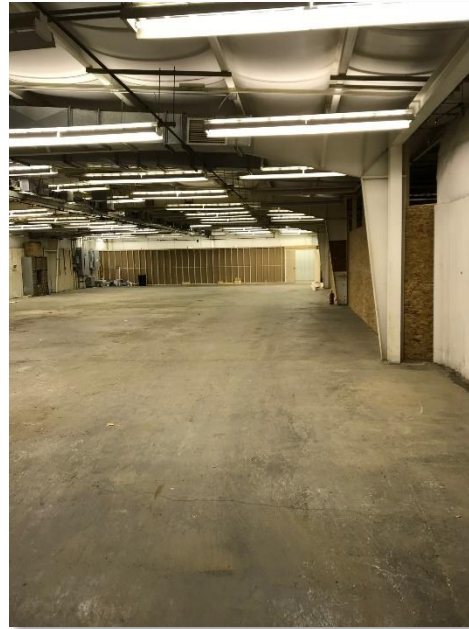
Unimproved – Rally Track

Classrooms – Maintenance Bay





Class room collocated with 6000 sq ft maintenance bay 2 mins from hard ball driving area and 4 mins from off-road rally driving area.



Contact Information:

- Chief Operating Officer: Keithw@asusa1.com
- Phone: 844-851-0911
- Email: info@ASUSA1.com
- Web: www.ASUSA1.com
- Face Book: www.facebook.com/ASYMMETRICSOLUTIONSUSA
- Address: Asymmetric Solutions, 431 Thomas Rd,
Farmington, MO, 63640