



# ASYMMETRIC SOLUTIONS

**NFSW MARITIME**

844-851-0911

[www.asusa1.com](http://www.asusa1.com)

MO,FL,NM

# NSFW Overview



Located 10 miles South of Perry, 60 miles East of Tallahassee, 145 miles West of Jacksonville. North Florida Special Warfare Center (NFSWC) established 2016 in Perry, Taylor County, The facility sits on 252 secluded acres (no noise, light, caliber or N.E.W restrictions). Currently comprised of:

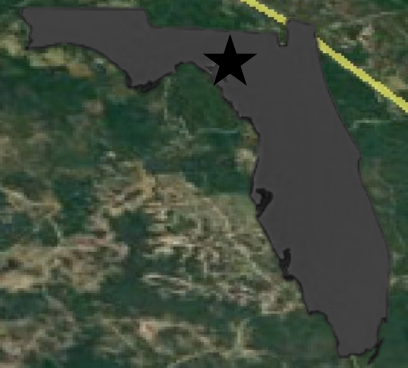
- Billeting accommodates up to 50 personnel (can increase as needed) with separate male/female areas
- A separate, multiple-room facility for Isolation/Planning/Mission Prep &HQ/Classrooms
- DOD/ATF compliant explosives and ammunition storage
- Drive up loading dock with Team size secured storage cages
- On-Site equipment, weapons, and storage for student/client use
- Rapidly Deployable Construction Capability for Customizable Special Projects
- Catered meals upon request
- A Military Operations in Urban Terrain (MOUT) training area consisting of multiple structures configured specifically for SIMMS and live-fire in designated areas. CQB capabilities consist of an approximate 14,000 square ft Fully Enclosed Shoot house utilizing SIMMS and UTM. 3-story VBSS Tower Complex supporting Urban Sniper Packages, Fast roping, and Rappelling.
- 1 X 1300 yard known distance range, 2 X 50yd 270 degree flat ranges, 2 x 100yd 270 degree flat ranges
- Extensive areas on-compound for mounted and dismounted movement, small unit operations, and helo operations, Short Take Off & Landing (STOL) & fixed wing operations off-compound
- Workout Facility and Running Trails
- **MARITIME** support assets include but are not limited to 11m RIB, Zodiacs, Safety Swimmers/Divers, Rescue Divers, Coxswains, Beach Landing sites, Live fire open water SDZ's, and local LE/ FEDERAL Maritime support assets

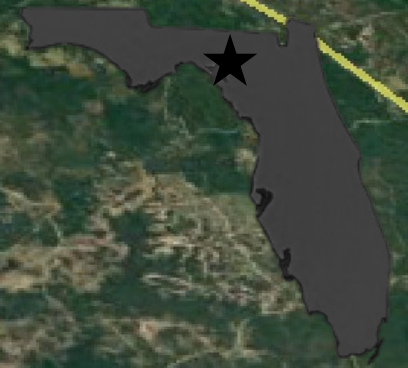
Exercise Support Capability for Customized Full-Spectrum/Full Mission Profile Operations/Training:

- Land/Air on-compound
- Land/Air/Sea off-compound: Extensive support and agreements/permissions in the city of Perry & surrounding area (relationships with City Council, County Commissioners, land owners), 8 miles from direct access to the Gulf of Mexico, 8 miles from Perry-Foley Municipal Airport (established relationship with NFSWC, equipped to support military & civilian fixed wing and rotary wing aircraft)
- Off-Site actionable Tgts

BLS#1

# OPEN WATER LIVE FIRE APPROVED





**BLS#1**

14.77 KILOMETERS  
20 DEGREES  
TO ENTRANCE WATERWAY  
BLS1

Main heading WP





BLS#1



29° 53.565'N  
83° 59.869'W

HC5

29° 52.145'N  
83° 54.299'W

HC4

29° 51.073'N  
83° 51.973'W

HC3

29° 49.625'N  
83° 49.456'W

HC13

Main heading WP

29° 48.306'N  
83° 57.571'W

HC6

29° 47.186'N  
83° 55.220'W

HC7

29° 49.023'N  
83° 48.215'W

HC12

29° 47.057'N  
83° 41.960'W

29° 42.276'N  
83° 59.863'W

HC8

29° 43.169'N  
83° 47.453'W

HC10

29° 39.861'N  
83° 41.562'W

HC11

29° 38.731'N  
83° 50.320'W

HC9

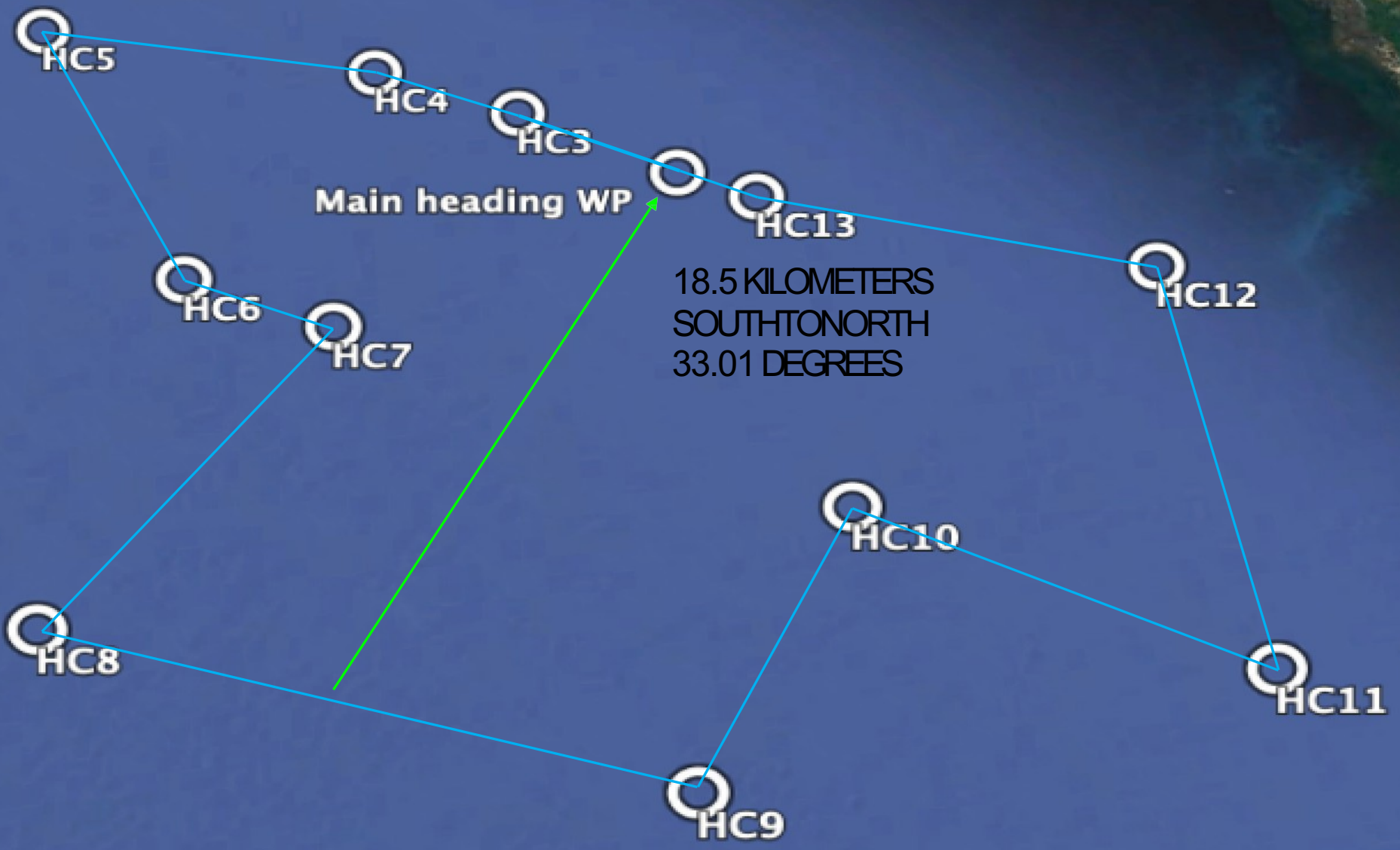
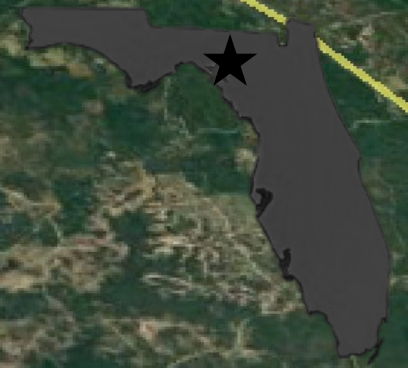


BLS#1





BLS#1



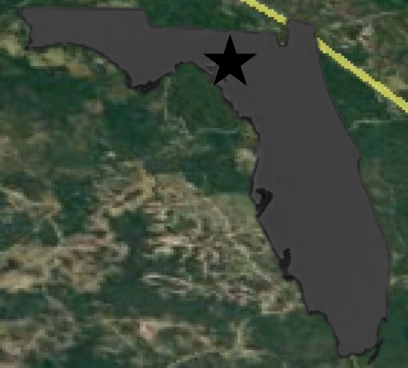
Main heading WP

18.5 KILOMETERS  
SOUTHTONORTH  
33.01 DEGREES





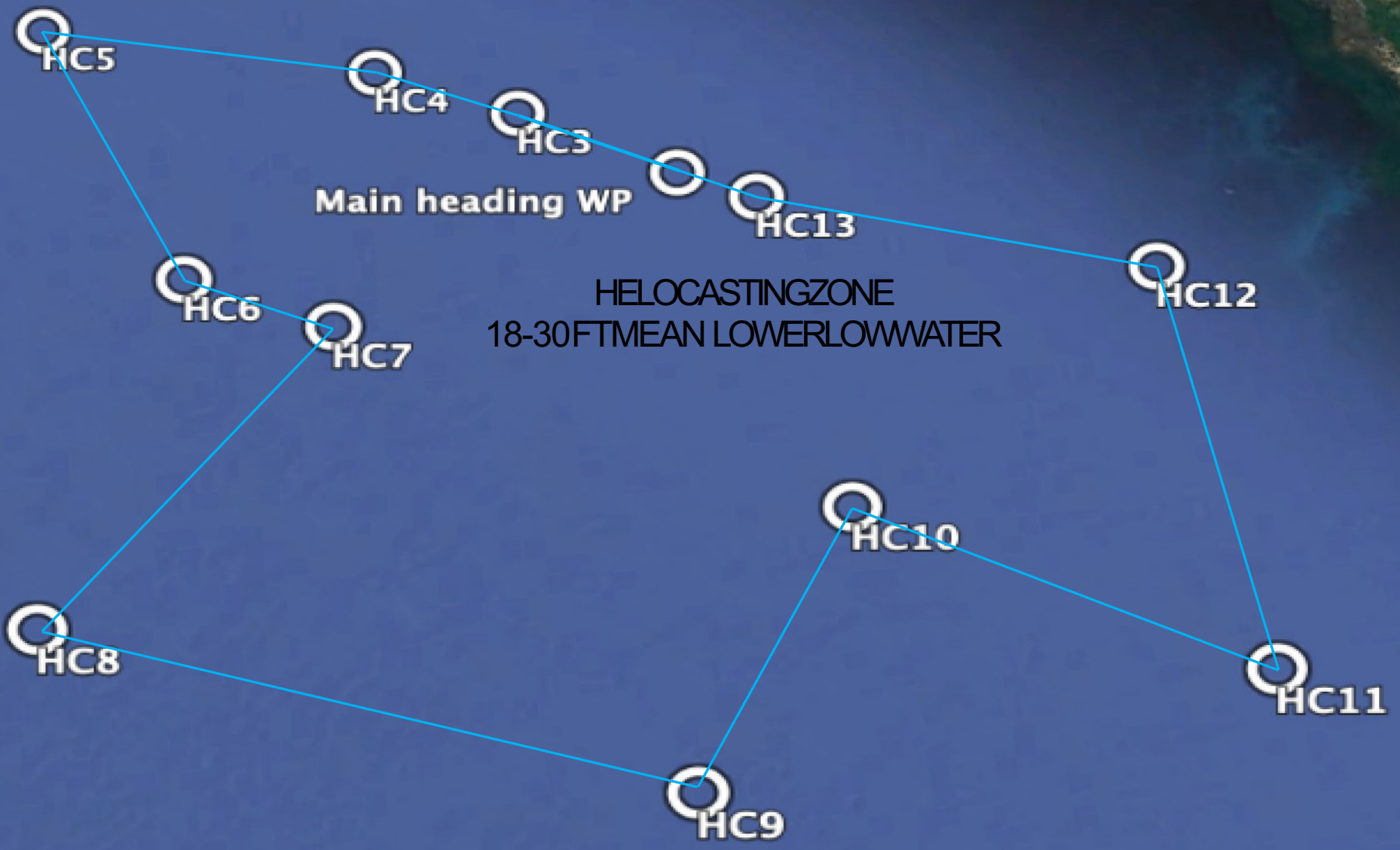
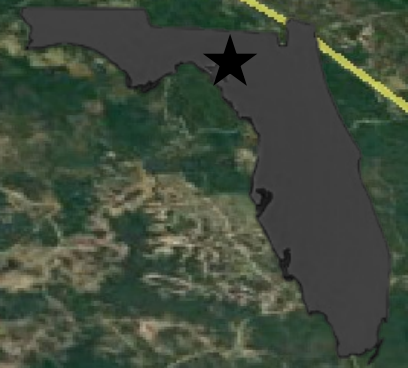
BLS#1







BLS#1



Main heading WP

HELOCASTINGZONE  
18-30FTMEAN LOWERLOWWATER





Little Grassy Island  
Big Grassy Island  
Rock Island

Bird Rock

BLS#1

W  
G  
G

F  
F

E  
E

D  
D

C  
C

B  
B

A  
A

P  
P

Main heading WP

HC13

Boat Wreck Obstruction

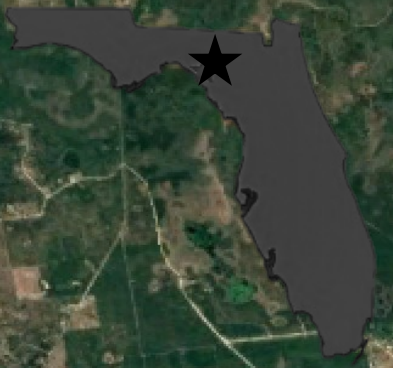
Phase Lines of Transit Helo Cast To BLS#1

Phase lines Alfa to Whiskey extend 500 m East and West from Direct Line of Azimuth

P Locations South/East/West Perimeter extend 1200m from Main Heading WP  
Helo Cast Perimeter/Safe Zone

© 2020 Google  
Data SIO, NOAA, U.S. Navy, NGA, GEBCO  
Image © 2020 TerraMetrics

Dark Island





Little Grassy Island  
Big Grassy Island  
Rock Island

Bird Rock

Dark Island

BLS#1

29°57'17.13"N  
83°45'16.75"W W

29°56'50.63"N  
83°45'31.86"W G

29°56'36.16"N  
83°44'58.82"W G

29°55'38.65"N  
83°46'15.14"W F

29°55'25.39"N  
83°45'41.65"W F

29°54'22.96"N  
83°47'0.54"W E

29°54'8.99"N  
83°46'26.45"W E

29°53'11.95"N  
83°47'41.66"W D

29°52'58.79"N  
83°47'7.65"W D

29°52'18.48"N  
83°48'14.45"W C

29°52'3.34"N  
83°47'40.59"W C

29°51'22.03"N  
83°48'48.68"W B

29°51'6.77"N  
83°48'13.74"W B

Helo Cast/Main heading WP

29°49'37.50"N  
83°49'27.36"W

29°50'16.27"N  
83°49'27.76"W A

29°50'3.65"N  
83°48'52.97"W A

29°49'55.23"N  
83°50'5.86"W P

29°49'25.91"N  
83°48'44.48"W P

Boat Wreck Obstruction

Main heading WP

7

HC13

29°49'4.17"N 83°49'46.00"W

© 2020 Google  
Data SIO, NOAA, U.S. Navy, NGA, GEBCO

Image © 2020 TerraMetrics



**NORTH ROCK RD WP**  
17RKP3710222673  
**NORTH HENDERSON WP**  
17RKP3748722216

**SOUTH HENDERSON WP**  
17RKP3601120893

17RKP4053520508 **F**  
17RKP4050520016 **E**

17RKP4271120450 **G**  
**ABANDONED MINE FIELD**

17RKP4330220041 **J**  
17RKP4334519693 **I**

**FWC GATE PRIMARY WP**  
17RKP3952719659

**PLINK-UP**  
17RKP4113919384 **H**

**ABANDONED MINE FIELD**

**BLS#1**

**LEGEND**  
1 KILOMETER

© 2020 Google

**N**  
Google earth



NFSWC



BLS#1





NFSWC



BLS#1





BLS#1

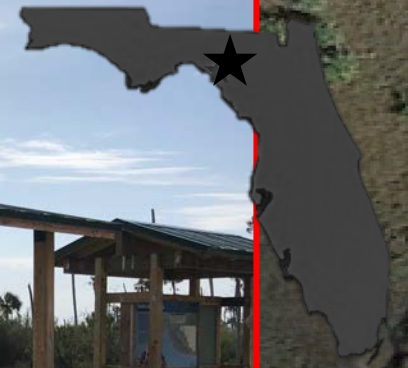




MARITIME  
OPERATIONS



BLS#1



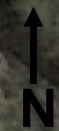
OCEAN



BLS#1



OCEAN





**B** BLS#1  
29°58'20.62"N  
83°44'42.18"W

1.68 Kilometers LOS

29°57'22.32"N  
83°44'50.66"W  
**A** ENTRANCE TO WATERWAY





**NORTH ROCK RD WP**  
17RKP3710222673  
**NORTH HENDERSON WP**  
17RKP3748722216

**SOUTH HENDERSON WP**  
17RKP3601120893

17RKP4053520508 **F**  
17RKP4050520016 **E**

17RKP4271120450 **G**  
**ABANDONED MINE FIELD**

17RKP4330220041 **J**  
17RKP4334519693 **I**

**FWC GATE PRIMARY WP**  
17RKP3952719659

**PLINK-UP**  
17RKP4113919384 **H**

**ABANDONED MINE FIELD**

**BLS#1**

**LEGEND**  
1 KILOMETER

© 2020 Google

**N**  
Google earth



## Contacts

For additional details or questions

Lance C. White Cell Director Email:

[LanceC@asusa1.com](mailto:LanceC@asusa1.com)

Keith W. Chief Operating Officer Email:

[KeithW@asusa1.com](mailto:KeithW@asusa1.com)

Steve O. Director of Ops NFSW Email:

[SteveO@ASUSA1.com](mailto:SteveO@ASUSA1.com)

Joe W. Director of Ops MWSW Email:

[JoeW@asusa1.com](mailto:JoeW@asusa1.com)

### Facility Addresses:

Missouri Mid-West Special Warfare Center (MWSW): 410 Thomas Rd, Farmington MO

Florida Special Warfare Center (FSWC): 9495 Puckett Rd, Perry, FL 32348

New Mexico DHTC: 21074B Rancho Canon de Luz, Ojo Caliente, New Mexico 8754